

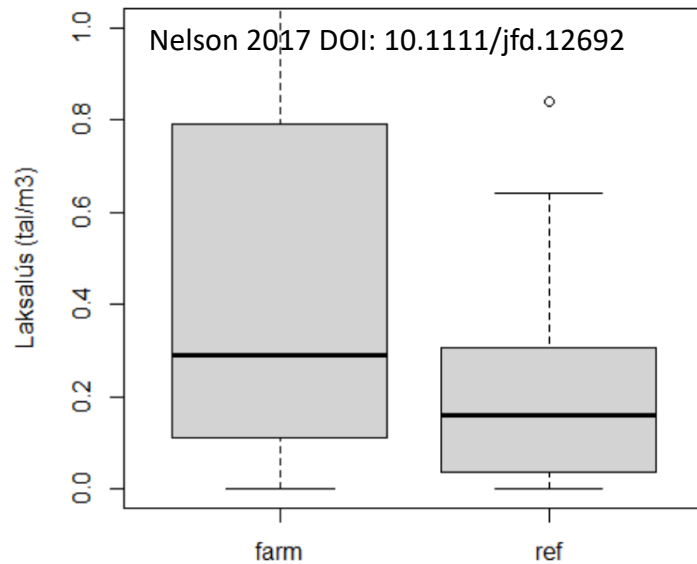


Hvar og á hvørjum dýpum finna vit laksa- og seiðalús

Gunnvør á Norði
Vitan til varandi aling, 5. mars 2021

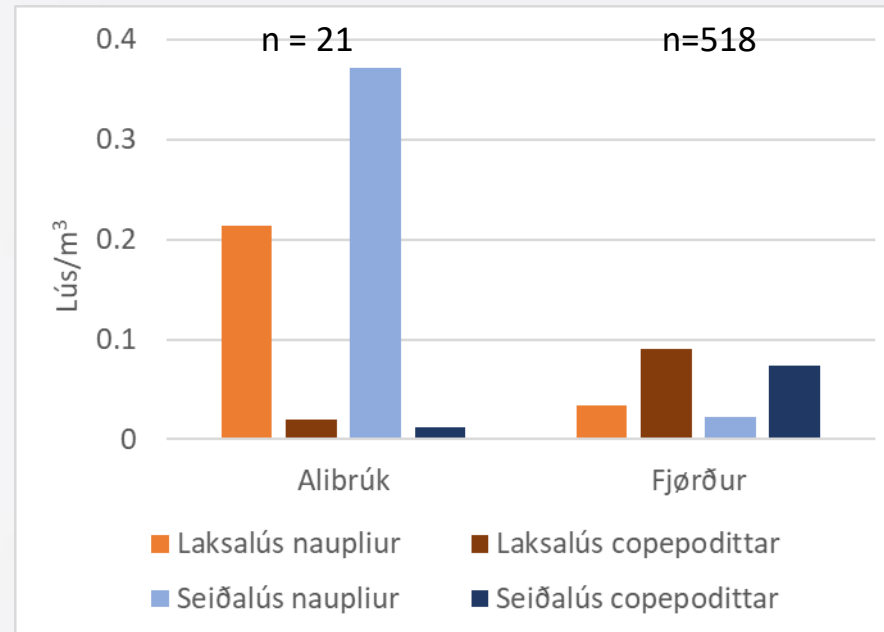
Langt ímillum lýsna í sjónum

- Laksalús stórsta avbjóðing í alivinnuni
- Smittar við búningarstigum, sum ferðast við streyminum
- Sera fáar vísindaligar greinar, har lús í sjónum er kannað beinleiðis
- Lágur tættleiki



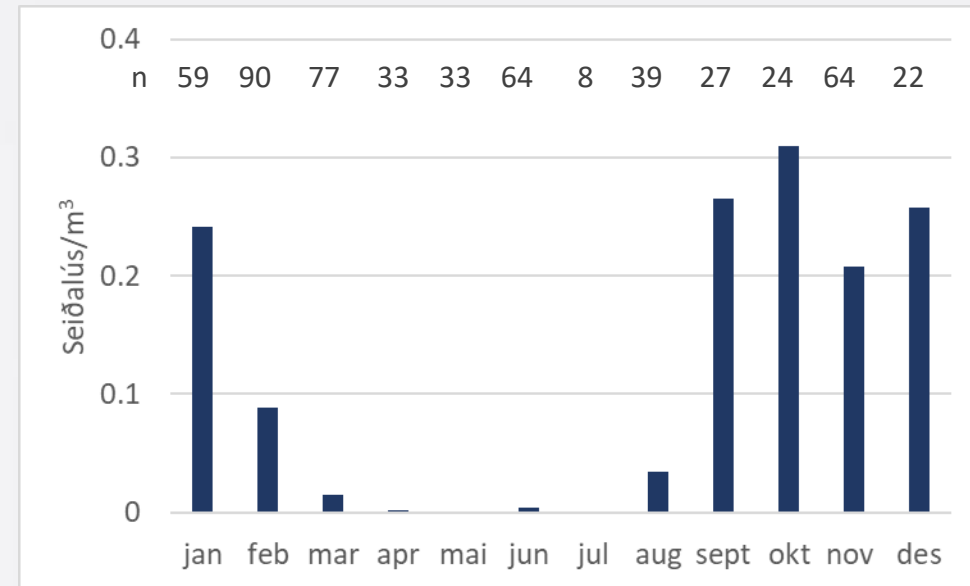
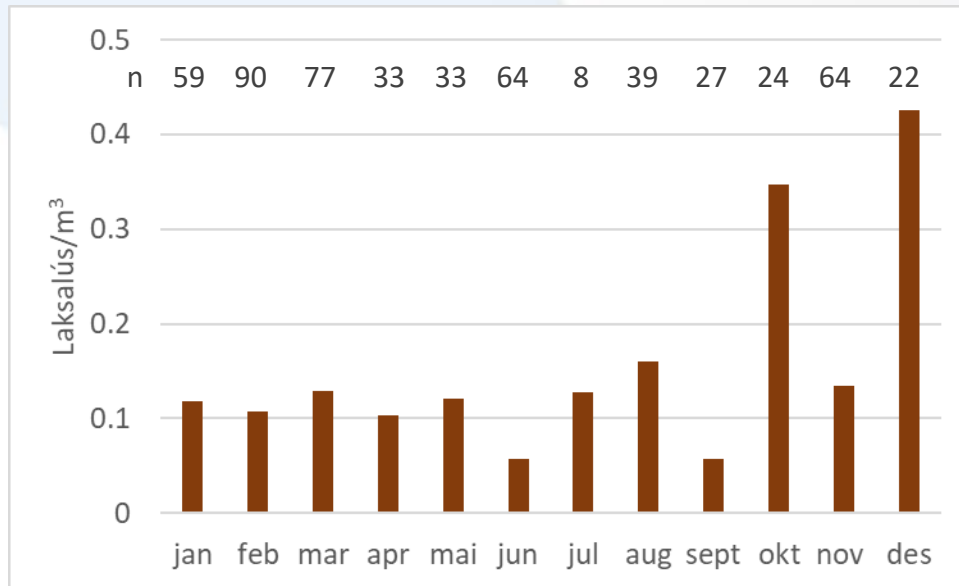
Kanningar í Føroyum

- Kanna lús í sjónum síðan 2013
 - 539 sýni á 0,5 m dýpi
- Verkætlan í Sundalagnum 2013-2018
- Størri ráðgevingaruppgáva í Sørvági 2017-2018
- Smærri uppgávur fyri alifeløg

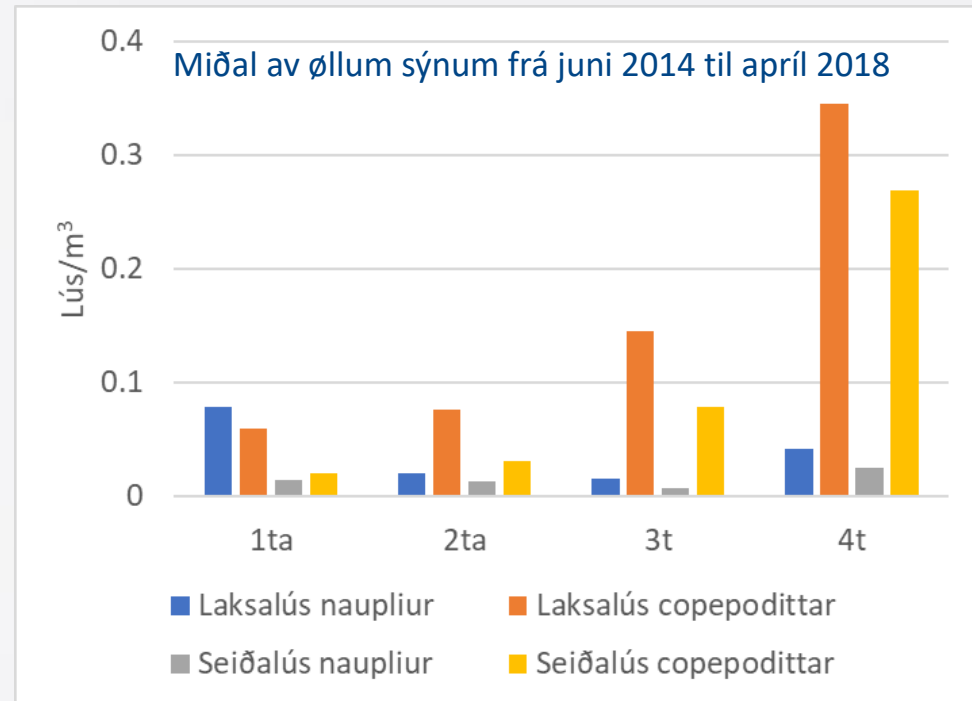
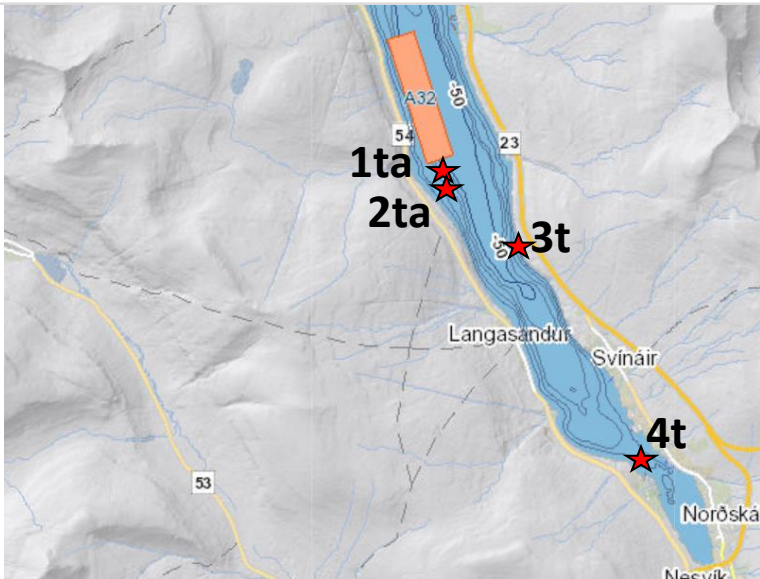
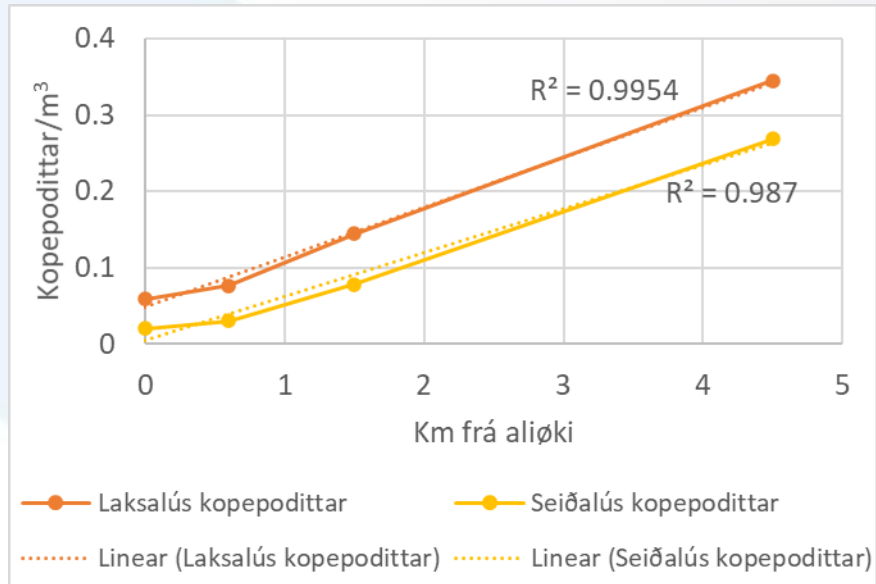


- 10 flytførar ella kynsbúnar laksalýs
- 25 vaksnar seiðalýs

Árstíð

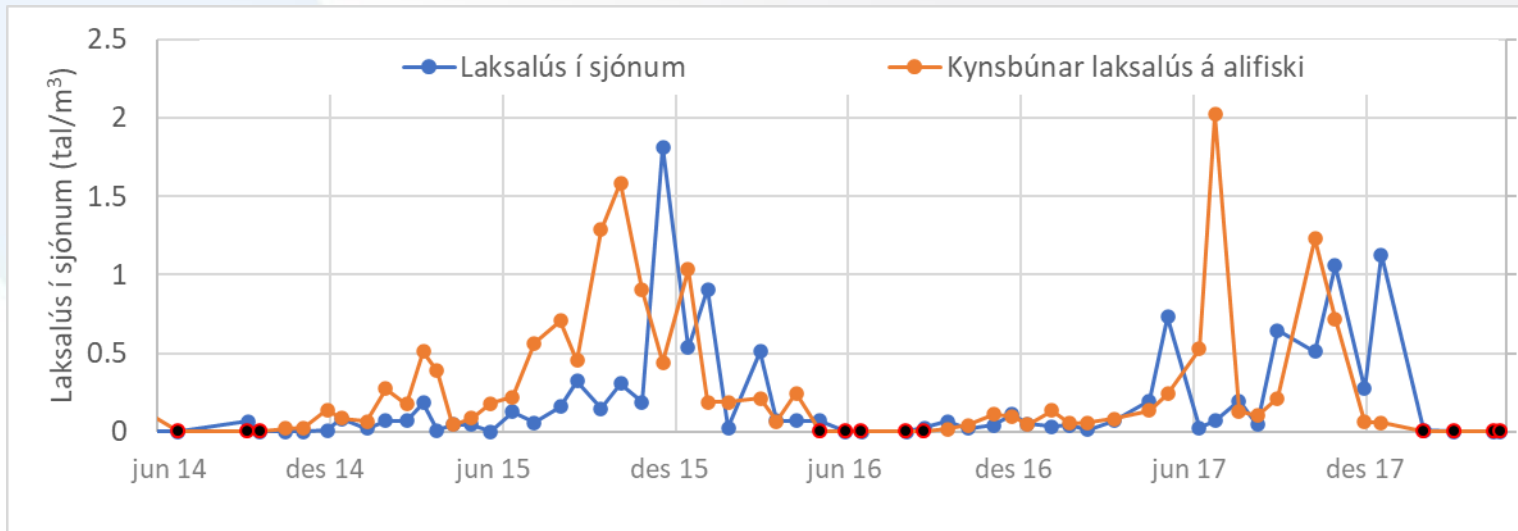


- Laksalús alt árið mest í október og desember
- Seiðalús mest um veturinn
- Líknanði árstíðarbroytingar sum við lús á laksi

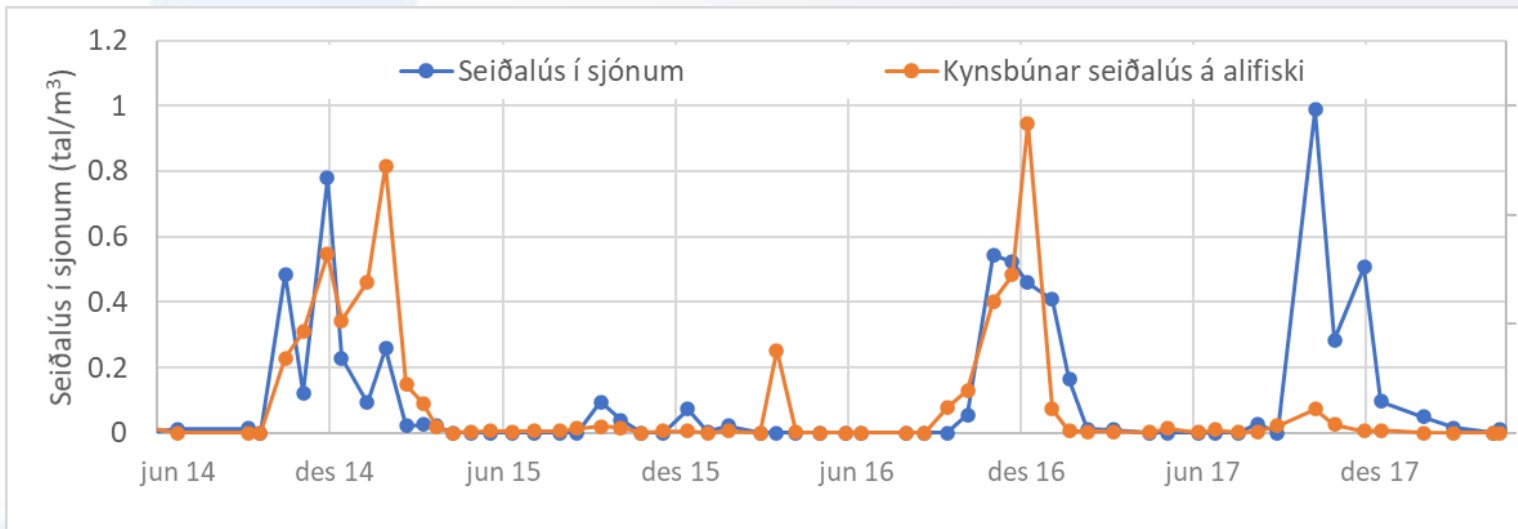


- Flest laksalúsanaupliur við alibrúkið
- Talið av kopepodittum økist inn ígjøgnum sundið

Lús á alifiski/sjónum Sundalagið norður



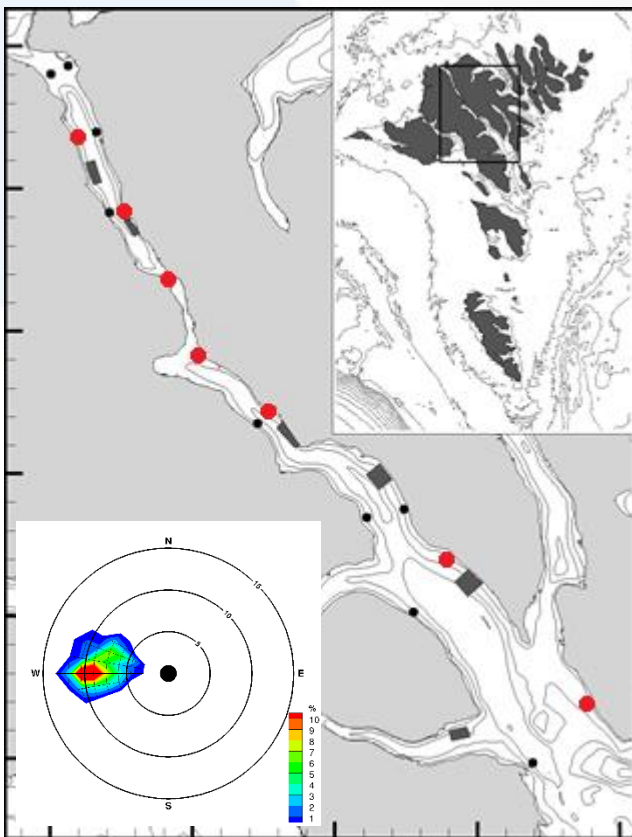
Laksalús
Miðal tættleiki
á firðum
 0.12 lús/m^3



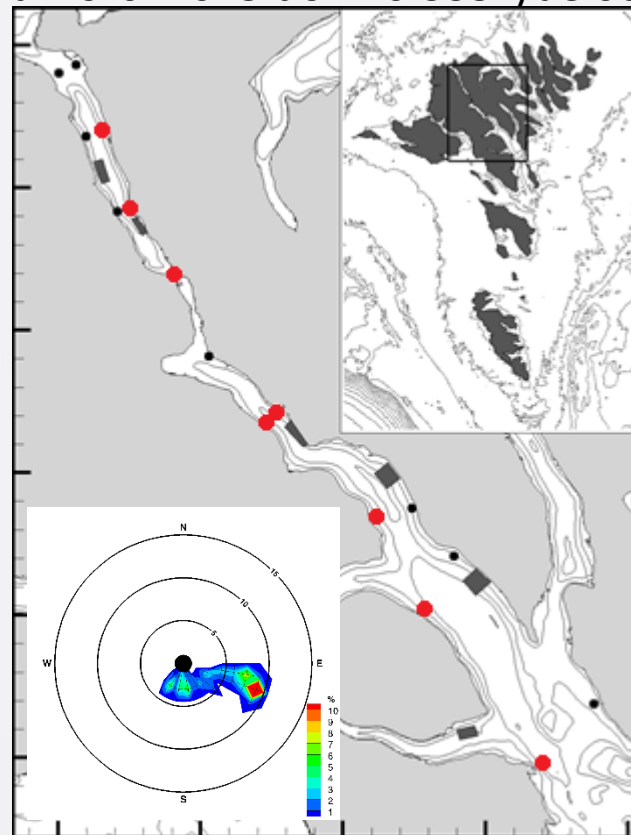
Seiðalús
Miðal tættleiki
á firðum
 0.10 lús/m^3

Vindur Sundalagið suður

á Norði 2015 doi: 10.3354/aei00134

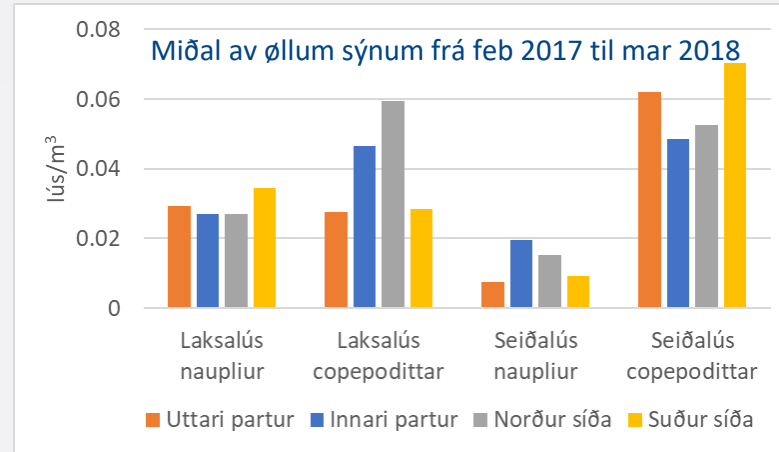
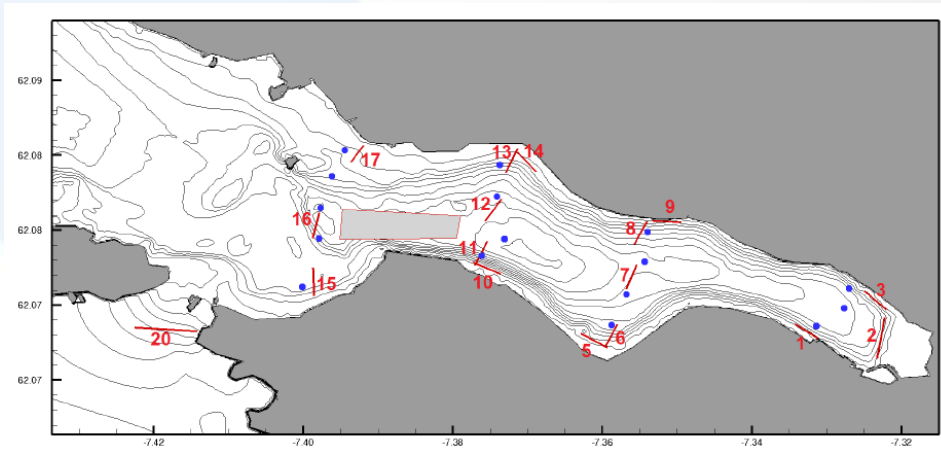


18 november 2013
Vindur frá vestri 12 tímar
upp til 0,06 kopepodittar/m³

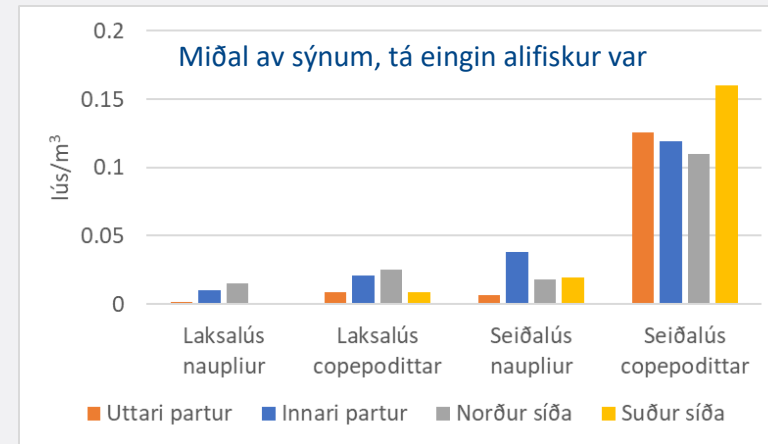
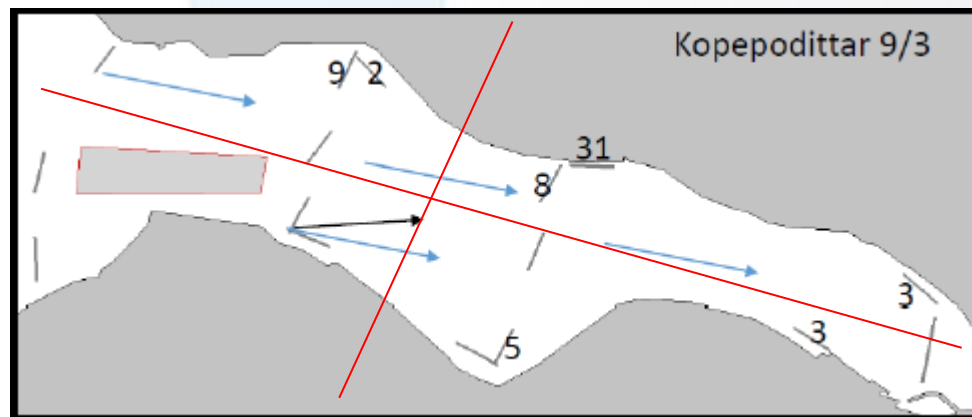


26 februar 2014
Vindur frá eysturi 12 tímar
upp til 0,21 kopepodittar /m³

Sørvágur

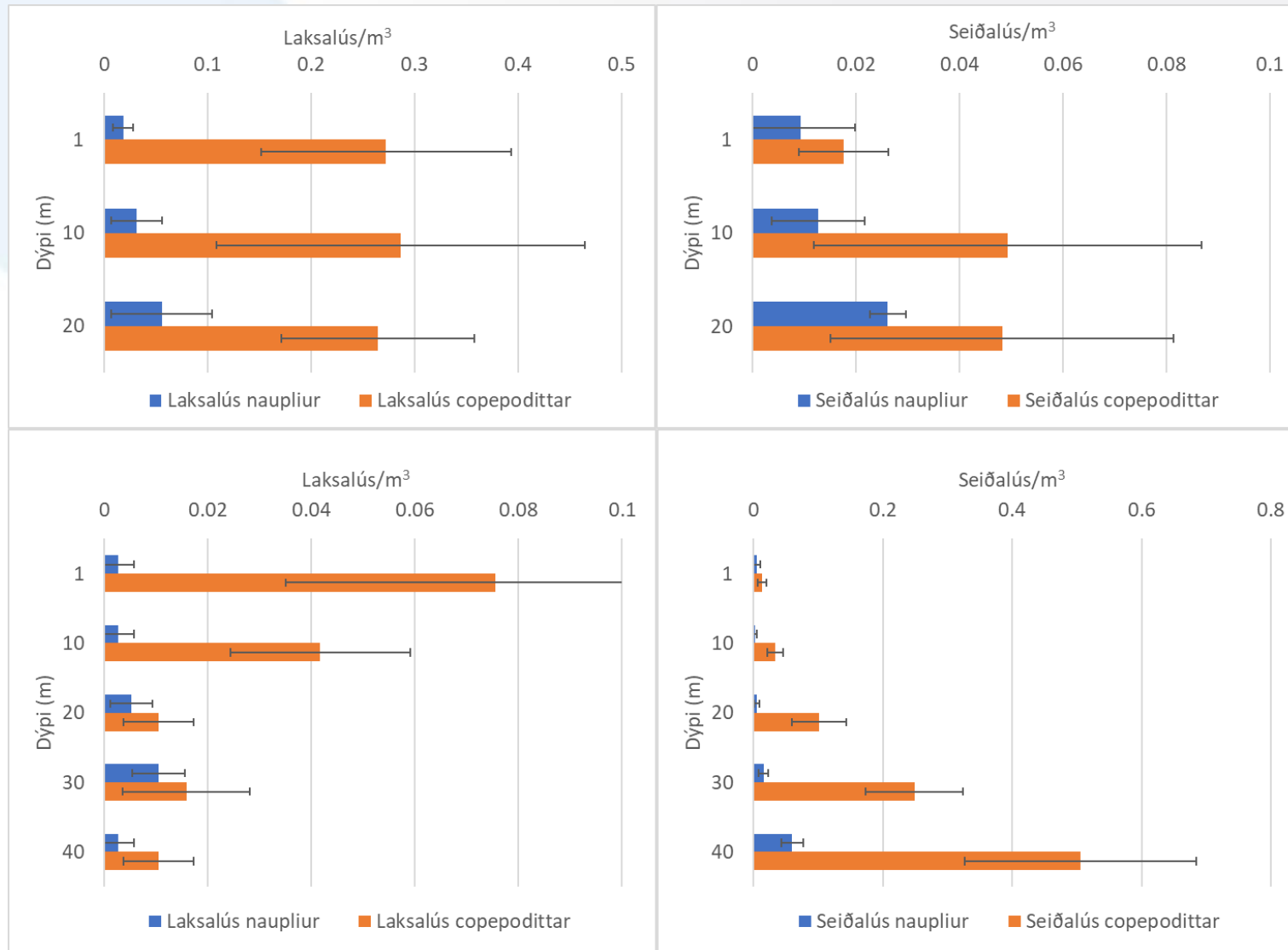


- 8 túrar
- 16 støðir



- 3 túrar
- 16 støðir

Dýpi



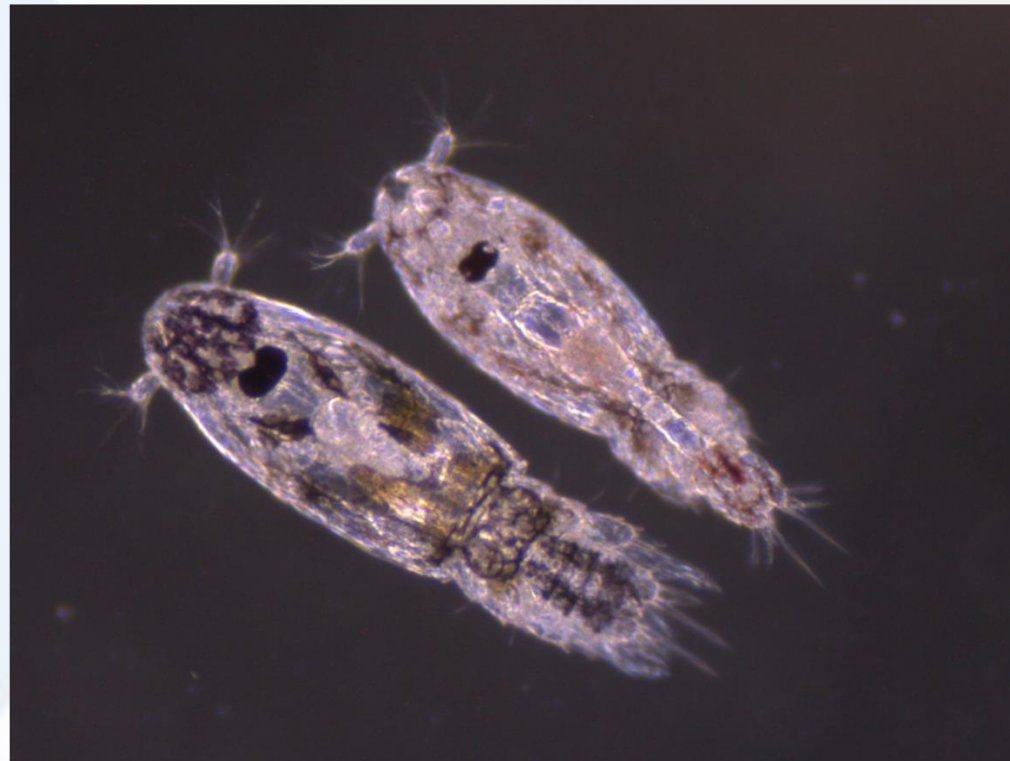
- 5 stöðir
- 15/12-2015
- 21/1-2016

- Vaksnar seiðalús á 20 m dýpi

- 12 stöðir
- 13/1-2021
- 18/1-2021
- 19/1-2021
- 25/1-2021
- 26/1-2021
- 27/1-2021

- Vaksnar seiðalús á 10 og 40 m dýpi

Takk fyri



Mynd: Eirikur Danielsen